



PRESS RELEASE

Logivations announces major customer win

Pfeifer & Langen counts on Logivations W2MO for Strategic Network Planning

Munich, 29 August 2016 – Pfeifer & Langen ranks among the most successful sugar producers in Europe. It offers a broad range of high-quality products within its brands Diamant Zucker and Kölner Zucker. Pfeifer & Langen counts on Logivations' (www.logivations.com) cloud-based strategic/tactical planning tool W2MO for the integrated holistic supply chain optimization from raw sugar production to final delivery to the customers.

All solutions available on the market were first examined in an extensive evaluation process. "The combination of the user-friendly, Google Maps based tool W2MO together with the competence of Logivations were crucial factors in our selection process", comments Olaf Sackmann, Head of Supply Chain Planning at Pfeifer & Langen. Furthermore Patricia Rachinger, Head of Product Management at Logivations explains: "The integration of warehouse and network planning in W2MO enables our customers to easily get transparency and calculate in detail the impact of quantitative changes in one location to the level of single machines. This significantly approves the quality of logistics network planning."

Logivations is the worldwide exclusive provider of such a mature and established solution which can be used either from the cloud or by local installation. Furthermore, W2MO uses an in-memory database which can manage huge amounts of data more efficient than traditional tools. A two-way data exchange of key business information is possible due to direct integration to SAP. Logivations is a SAP Application Development Partner.

Currently the solution is being implemented and integrated with SAP and should be available for daily operations from September.

(Copy or link requested if published)



About Logivations

Logivations GmbH is an international consulting and software solution provider with headquarters in Munich. The company develops innovative solutions based on advanced web technologies for holistic design and optimization of all logistics aspects. The software solution W2MO is the leading Internet platform for logistics design, 3D-simulation, optimization, performance evaluation and operational management of logistics processes. W2MO has a user-friendly interface and can be easily integrated. More than 30.000 professional users worldwide use W2MO directly from the cloud. W2MO has been nominated several times, including for the “Best Product” at LogiMAT 2011. Gartner Inc., the US research and advisory corporation, highlighted Logivations in their 2013 report on “Cool Vendors in Supply Chain Management Applications”.

www.logivations.com

About Pfeifer und Langen

Pfeifer & Langen GmbH & Co. KG is a German sugar producer with headquarters in Cologne. The company distributes sugar products for household and industrial purposes with the brand names Kölner Zucker and Diamant Zucker. Pfeifer & Langen is the third largest German sugar producer. The company Pfeifer & Langen has been family-owned since its foundation in 1870.

Additional information + pictures:

Daniela Glemnitz

Logivations GmbH

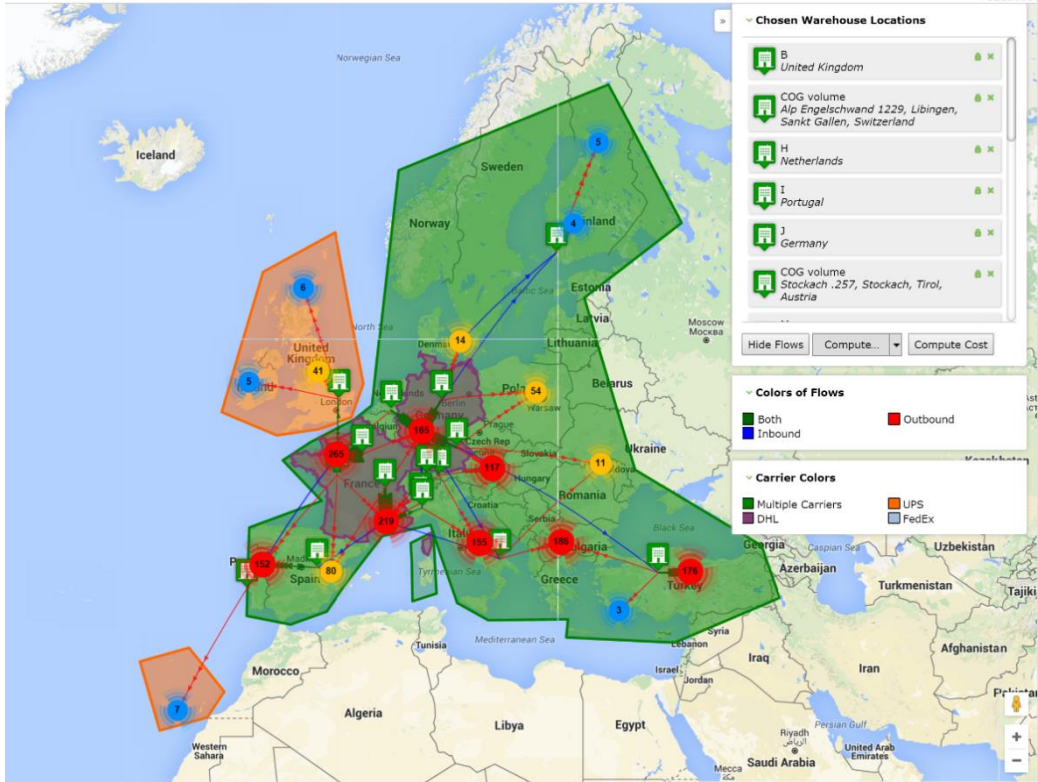
Oppelner Str. 5

82194 Groebenzell / Munich

Germany

Phone: +49 89 / 2190 975 – 0

E-mail: marketing@logivations.com



Picture 1: Mapping of product flows and area polygons

'Landed Costs je Produkt' für Layout 'Demo 011: LNO'

Ausgewählt: 0

100 1-100 von 101

Account	Produkt	Kampagne	Account Typ	Gesamte Landed Costs des Accounts[j]	Menge je Produkts und Account
7620175	YV-YK	2016/Q1	Kunde	8.00	1376
7618049	YV-YK	2016/Q1	Kunde	2.99	21
3614661	YV-YK	2016/Q1	Kunde	18.96	2459
36037	YV-YK	2016/Q1	Kunde	3.36	60
3484635	YV-YK	2016/Q1	Kunde	16.30	18
3447897	YV-YK	2016/Q1	Kunde	28.78	61

Picture 2: Table "Landed Costs"